



Separation Made Easy.

Here you will learn what to do with all the waste.





We have the correct disposal at heart.

The cycle of resources will only function by correctly separating and processing the waste. For many years, USB has been handling Bochum's waste disposal and has been your competent partner when it comes to waste separation. We have a suitable solution for every question.

Waste separation means value preservation

Raw materials are precious - this makes recycling more important than ever. A large part of the household waste consists of plastics, metal, glass, paper and biodegradables.

All of this can form the basis for new things and, thus, save natural resources. USB Bochum GmbH provides a range of services for an optimum waste separation. Of course, we also depend on your co-operation. What you can do for a functional cycle of resources, you will find in this brochure.

Contents

Tons of Service: Waste Separation Made Easy

| | |
|--|---------|
| Part or Full Service | Page 4 |
| Residual Waste Bin | Page 5 |
| Scrap Paper | Page 6 |
| Recyclable Material Bin | Page 7 |
| Bulk Rubbish | Page 8 |
| Bulky Waste Online | Page 10 |
| Bio Bin | Page 12 |
| Green Cuttings | page 15 |
| Electrical and Electronic Equipment | page 16 |
| Glass Container | page 19 |
| Additional Waste | page 20 |
| Container Service | page 21 |
| Household Collecting Box | page 22 |
| Corks, CDs and DVDs | page 23 |
| Tips for Waste Prevention | page 24 |
| Waste Prevention Projects of the USB | page 27 |
| Appointment Allocation for Recycling Centers | page 28 |
| Recycling Centers | page 30 |
| Problematic Waste | page 31 |
| Street Map and Frequently Asked Questions | page 32 |



Always At Work: Our Partial- and Full-Service

The various bins are assigned to one of two service categories: Residual waste and bio bins receive the full service, recyclables and paper bins receive part service.

Full-Service means:

Each residual waste or organic waste bin will be collected from the pitch by the USB and returned. The bin may be placed up to 10 m from the property line by the public road. Longer routes over 10 m are only operated by the USB upon payment of a surcharge. In particular the transport route as well as the bin location must comply with the requirements according to the waste statutes of the City of Bochum in the respective valid version.

Partial-Service means:

You place the bin on the sidewalk on the street side of the property for emptying no later than 6:00 a.m. or, if that is not possible, on the property at the property line.

The full service, which is subject to a charge, can be booked on request. As the owner, you can apply in writing to the USB to switch from the partial to the full service. The QR code will take you directly to the website with the additional costs listed.



Please note: Pitches must be concreted or paved and are to be kept free of snow and ice. Transport routes require a minimum width of 1.20 m.



Capable of Just Everything: Our Residual Waste Bin

The residual waste bin is for household waste which cannot be used any further. It is combusted in waste incinerators and mainly transformed into electricity and heat.

This belongs in the residual waste bin:

- animal litter, animal feces
- ash
- bird cage litter
- candles
- Ceramics
- China
- cigarette butts
- cleaning cloths
- craft scraps
- crockery shards
- diapers
- dressing material
- empty cement bags
- empty toner and ink cartridges
- female hygiene products
- flat, special or mirror glass
- food leftovers
- heavily soiled papers, cartons, cardboard
- heavily soiled recyclable (e.g., mugs with residual content)
- house or street sweepings
- household paper
- hygiene products
- light bulbs (no energy-saving lamps)
- medications
- napkins
- photographs
- picture frames
- rubber or leather residues
- sound and video tapes
- stockings
- syringes (dispose in puncture-proof containers)
- vacuum cleaner bags

If there is no bio bin, then also:

- Kitchen waste and biodegradables like (potato wedges, plants)

Our tip for the residual waste bin:

Is your residual waste bin often not completely full or constantly jam-packed? As a property owner or administrator, you can apply with USB in writing for a change of the container volume or order online at: www.usb-bochum.de/behaelterbestellung

You can find all emptying dates under the following QR code.





For the Environment's Sake: Wastepaper Collection Every Four Weeks

Wastepaper is the most important raw material for the production of new paper. Producing recycling paper requires less water and energy than producing new paper.

This belongs in the blue paper bin:

- books without plastic binding
- boxes
- toy packaging without plastic parts
- cardboard
- carton
- carton files
- catalogues and telephone directories
- clean food packaging
- detergent boxes
- mailing boxes
- newspapers and magazines
- packing paper
- paper bags
- pizza boxes (with little build-up)
- brochures (without foil)
- sugar and flour bags

This does not belong in the blue paper bin:

- Baking tray liner
- carbon or blue paper
- diapers
- heavily soiled paper, carton or cardboard
- hygiene tissues
- photographs
- tetra packs
- wallpaper and wallpaper scraps

Information regarding wastepaper:

Many paper packages (e. g. of fish fingers, pizza or spinach) still end up in the combined recycling material bin. Please help bring paper to a high-value recycling by disposing of paper packaging in the blue paper bin.

You can find all emptying dates under the following QR code.





Cleverly Combined: Recyclable Materials Bin or Bag



Packaging and items made from plastic and metal can be collected in the combined bin or bag for recyclable materials and subsequently be sorted and processed.

These plastics, for example, belong in the recycling bin or bag:

- buckets
- children's toys
- clean cover sheeting
- clean plastic bowls
- bags and foils
- flowerpots (no ceramic)
- plastic folder
- transport boxes

These metals, for example, belong in the recycling bin or bag:

- Aluminum dishes and foils
- baking forms
- fittings
- pans
- saucepans
- tin cans
- tubes

This light packaging with and without a green dot belongs, for example, in the recycling garbage can or the recycling bag:

- Care product and detergent bottles
- Light metal packaging
- light plastic packaging
- Styrofoam packaging (from electrical appliances or fruit)
- Tetra Pak (beverage and milk containers)
- Yoghurt cups

Important with regard to the recyclables bin and bag:

Recyclable waste sacks from now only against QR code. You will receive the code after complete registration in our customer portal at www.usb-bochum.de/kundenportal.

Click here for the customer portal:





Get Rid of the Clutter: Bulk Rubbish

You may have household items which do not fit into the residual waste bin collected by USB once a year free of charge. In the USB brochure “Too good to Throw Away” you will find contact places in Bochum to save old furniture from the bulky waste.

This can declare the following as bulky waste:

- Aquariums
- armchairs
- bed frames
- bicycles
- carpets
- computers and monitors
- corner banks
- cupboards
- extractor hoods
- Furniture with electronic components*
- garden furniture
- large household appliance (stoves, diswashers, washing machines, tumble dryers, etc)
- mattresses
- metal furniture
- microwaves
- organs, pianos
- prams
- refrigerators (empty)
- shelves
- small furniture (coat racks, mirrors, etc)
- sofas
- suitcases (empty)
- TV sets
- worktops

This is not bulk rubbish:




- bathtubs
- batteries
- construction timber, rubble, roofing felt, stones, chemicals, varnish, paint
- external roller blinds, windows, doors, car parts (tyres, roof racks, etc)
- garden fences
- heaters, oil heaters
- household waste
- old clothes
- panels, laminate (wall and ceiling claddings)
- shower cubicles
- storage heaters
- toilet bowls
- wash basins

* Find more information on page 16 or at www.usb-bochum.de/bfallsammlung/#spermuell

Hand in bulk rubbish yourself:

In small quantities up to 2 m³:

Delivery not possible with transporters or trailers!

- Wattenscheid, Blücherstraße 53  max. 1,00 m
- Bochum-Werne, Brandwacht 49  max. 1,00 m
- Bochum-Linden, Am Sattelgut 132  max. 1,00 m

In larger quantities and bulky furniture:

- Wertstoffhof Havkenscheider Straße

Bulky waste appointments can be booked quickly and bindingly with just a few clicks.

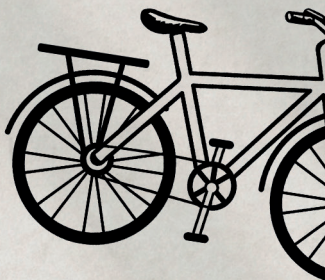
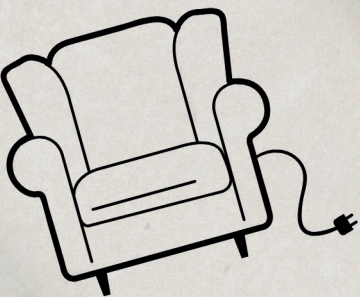
After entering your name, address and contact details, you can use the link www.usb-bochum.de/sperrmuellbestellung to select the bulky waste items and register the appropriate number of items.

The system automatically suggests possible collection dates. Important! After selecting the date, please be sure to check your e-mails and confirm the date. The date is not fixed until you confirm it via the link in the e-mail. Once a year, every household in Bochum can request a free bulky waste collection.

Bulky waste includes, in particular, household items and furniture from private households that do not fit into the waste bins provided because of their size, weight or quantity and therefore cannot be disposed of in the residual waste bin.

Registration by telephone is still possible during office hours on the free service number 0800 1995900.





Startseite – USB Bochum GmbH | Info & Service | Bildungsbereich | Karriere | Wohnanlagen | Presse | Kontakt

SPERRMÜLLBESTELLUNG

• Einträge in diesen Feldern sind erforderlich.

Anfallstelle

Straße Hausnummer *

Weiter zu Auftraggeber ▶



Alles **BIO** *für die*
TONNE

**GIB MIR
DEN REST!**

**BIO
TONNE**



Designed to Grow: The Bio Bin

Organic waste is collected in the organic waste garbage can so that it can be recycled separately from residual waste in a biogas plant.

This belongs in the brown bio bin:

- bread and cake leftovers
- coffee grounds and filter bags
- eggshells
- feathers
- flowers and plants (without pots)
- foliage
- food leftovers (in newsprint paper)
- fruit and vegetable leftovers
- hair
- lawn cut
- meat and fish leftovers (in newsprint paper)
- potting soil
- sawdust from untreated timber
- tea bags
- tree and bush cut residues
- wild herbs

This does not belong in it:

- animal litter, animal feces
- ash, cigarette butts
- charcoal
- diapers
- foil and plastic bags
- packaging material made from plant starch
- street sweepings

Green and garden waste may be handed in free of charge at all recycling centers. Kitchen waste can only be handed in for residual waste at the recycling center Havkenscheider Straße for a residual waste fee.

Tips for the bio bin:

- keep food leftovers dry
- wrap food leftovers tightly in newsprint paper
- keep the bin shut
- line the bin with newsprint paper
- clean it regularly with washing-up liquid
- sprinkle the lid and the waste with vinegar-water or garden soil and sawdust
- If required, micro-biological bio or dustbin cleaners are recommendable

CROSS YOUR HEART. CASHLESS PAYMENT MAKES EVERYTHING SO EASY.

At our recycling center Havkenscheider Straße (am Harpener Watt) you can also conveniently pay with your EC card.





Well hedged: The Extra for the Green Cut

You may hand in your garden waste at all recycling centers throughout the year. During the gardening season, we set up additional delivery points for green cut.

Green Cut Collection

From spring to autumn, we accept your green cut from Monday to Friday between 10.00 a. m. and 5.00 p. m. and on Saturday between 10.00 a. m. and 3.30 p. m. at Bergener Straße 59 in Bochum-Hiltrop.

Should USB Bochum implement an additional seasonal collection point for green cut in spring and in autumn, this will be announced in the media. You will get further details on times and dates also on www.usb-bochum.de

We accept in common household quantities:

- branches
- foliage
- hedge and shrub cut
- lawn cut
- root structures and roots up to a diameter of 20 cm
- tree cut (logs)
- tree pruning (billet wood)
- tree trunks up to a diameter of 20 cm and an edge length of 1 m

We do not accept:

- Potting soil
- topsoil
- Turf

After closing of the green waste collection center, the wild deposit of green cut is prohibited. Offences may be punished by fines.

Note:

Robust green waste sacks with a volume of approx. 200 l can be purchased at the USB administration, Hanielstr. 1, for € 2.50 each.



Professionally Disposed Of: Electrical and Electronic Appliances

Discarded electrical and electronic appliances may not be disposed of along with the residual waste, for electro-scrap often contains environmental pollutants like leads and asbestos. At the same time, electrical appliances contain many recyclable materials. Therefore, please deliver your appliances to our recycling centers, so that they can be professionally disposed of.

At our recycling centers (Wertstoffhof) in Bochum you can deliver the following electrical appliances free of charge:

- Furniture with Electronic Components
- Antennas, plugs and adapters (mandatory from May 2019)
- cooling devices like fridges and freezers
- digital cameras
- energy-saving lamps
- fluorescent lamps like neon lights, UV emitters
- IT and monitor appliances as well as PCs, printers and TV sets
- large household appliances like washing machines, stoves, ovens
- mobile telephones, if possible, without batteries and data
- small household appliances like toasters, irons



Would you like to have refrigerators, large household appliances or furniture with electronic components simply picked up? Make an appointment for bulky waste collection. Electronic appliances and furniture with electronic components must be placed separately from the rest of the bulky waste.

Notice:

We only accept WEEE* in quantities customary for households. Furniture with electronic components (recliners, illuminated mirror cabinets, electric slatted frames, etc.) can only be handed in for self-delivery at the Havkenscheider Straße recycling center.

* Waste Electrical and Electronic Equipment

Notice:

Since July 2022, grocery stores and supermarkets also have to take back waste electrical equipment free of charge. The conditions for this can be found at www.elektrogesetz.de.



Quite fast! Without the bag!

Switch to the recycling garbage can now!
A clean affair!



A Safe for Recyclables: Our Glass Containers



The disposal of waste glass lies in the hands of the USB subsidiary RAU GmbH. For the cycle of resources to function smoothly, about 300 container stands are equipped with about 800 glass containers.

Out of consideration for neighbours and the environment

When discarding waste glass, especially in larger quantities, noise can hardly be avoided. This is why we ask you to discard your waste glass, out of consideration for the residents, only on workdays between 7.00 a. m. and 8.00 p. m.

This belongs in the glass container:

- Beverage bottles
- Empty glass jars
- Glass flasks
- Miscellaneous spirit bottles
- Preserving jars (empty)

Please discard coloured glass you cannot assign in the container for green glass.

This does not belong in it:

- bowls
- ceramics
- china
- decanters
- drinking glass
- Glasses and bottles which do not fit into the opening
- Lead crystal
- Light bulbs
- mirror glass
- optical glasses
- screw caps
- special glass
- Windowpane

Please discard those materials in the residual waste.

Please hand in fluorescent lamps and energy-saving lamps at the recycling centers.

A complete overview of all depot container locations can be found under the following QR code.





When it Gets a Little More: Additional Waste

If you have any residual waste exceeding house-hold-typical quantities, for instance after a party or after tidying up, you have the following choices:

Deliver it by yourself

You may deliver residual waste up to a maximum quantity 2 m³ to the Recycling Center Havkenscheider Straße.

Have it collected

Alternatively, you can fill the additional residual waste into official rubbish bags (2.50 EUR/piece) and place them next to your residual waste bin. You will find the selling points for the official rubbish bags on our website **www.usb-bochum.de** or at **phone number 0800 3336288**.

Event bins for parties and celebrations

Just order an event bin for the event. We are pleased to quote a lump-sum price. Just phone us free of any commitment or send us a fax.

Phone 0234 3336-243 // Fax 0234 3336-209

Waste consultancy

Do you have any questions regarding the disposal of certain waste or regarding the avoidance of waste? Then please contact our waste consultants. The waste consulting staff is available **Monday** through **Thursday** from **8:00 a.m. to 6:00 p.m.** and **Friday** from **8:00 a.m. to 3:00 p.m.**

Phone 0800 3336288 // Fax 0234 3336-279

Contact form www.usb-bochum.de/kontakt

E-Mail: abfallberatung@usb-bochum.de



For the Coarse and the Big Stuff: Container Service USB Service GmbH



Particularly construction works, re-decorating and gardening entail a lot of waste. This requires large-volume containers. USB has a suitable offer for you.

Containers up to 10 m³

Containers with a capacity of up to 10 m³ are easy to maneuver and also serve private purposes. Containers of 2, 5, 7, and 10 m³ are available with or without lid. We deliver containers with a retractable lid in the sizes 5 and 7 m³.

Container up to 33 m³

Containers in the sizes 20 and 33 m³ provide a lot of room for waste and are predominantly meant for commercial use. They require more maneuvering and unwinding space.

This is container waste:

- **mixed construction waste:** gypsum and plasterboard, plastics, and wallpaper residues
- **rubble:** mineral material like wall structures, bricks, roof tiles, concrete, tiles, mortar and plaster residue, wash basins and toilets
- **excavated soil:** soil and topsoil, clay, gravel, stones, and sand
- **compostable waste:** foliage, lawn and green cut, branches, and tree trunks

Contact and Order:

The USB container service is available from **Monday to Friday from 7.00 a. m. to 4.00 p. m. at:**

Phone 0234 3336-212 / -215 // Fax 0234 3336-220



For Special Cases: The Household Collection Box

Where to put the empty batteries or energy-saving lamps? These cannot be discarded with the residual waste but have to be disposed of separately. The household collection box makes the collection of various recyclables easier for you and takes them back into the materials cycle quickly and reliably.

The nicely shaped and practical cardboard box swallows CDs, DVDs, batteries (mask the pole), button cells, energy-saving lamps, LEDs, and corks. When the box is full, you can swap it against a new box at every recycling center in Bochum.

Each collection box has three openings of different sizes for three different materials. You choose one material per opening (for example corks) and tick the respective field on the box.

You can get the household collection box in pleasant designs at all recycling centers in Bochum, at Verbraucherzentrale [consumers' organization] Bochum, Große Beckstraße 15, and at USB, Hanielstraße 1.

The multi-collector:

An additional service is available to you at the technical city hall. This big collection container currently enables you to discard the following household materials quickly and simply:

- CDs and DVDs
- charging cables with or without power supply unit
- corks
- printer cartridges



Collection Value: Corks

The demand for the natural product cork is rising and cannot be met by the natural growth any longer. To date, only a tenth of the bottle cork is fed into the resources cycle. Please help to increase the amount!

Please only collect natural cork from wine, sparkling wine and spirits bottles. The best is to use our household collection box for that matter. Air-permeable bags made from jute or synthetics are suitable for larger quantities. Hand in the collected corks at the recycling centers, at the consumers' association or at USB in Hanielstraße . Please take larger quantities straight to Hanielstraße 1.

Not for the Bin: CDs and DVDs

CDs and DVDs can be processed into high-value products - if they are fed back into the resources cycle. The household collection box is suitable for their collection.

Where are they collected?

You can hand in individual CDs and DVDs at our recycling centers, the district administrative offices as well as Verbraucherzentrale Bochum. Please take numbers larger than 20 straight to USB Recycling Center. The plastic covers can be disposed of in the recycling garbage bin.



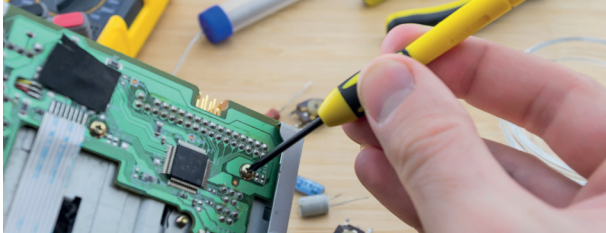
Avoiding Waste – the First Step towards Sustainability

The key priority for waste management is to avoid waste or to utilize it. The closed-loop economy is supposed to save natural resources and to ensure the protection of people and the environment while producing and processing waste.

How can one counteract the throwaway mentality and the waste of resources by avoiding refuse?

Under the headline “Programs for Waste Avoidance” there are projects and measures for that matter all over the EU member states. We would like to present some ideas to you here, which almost everybody can integrate into daily life:

- **Buy as few products with packaging as possible**, because packaged and sealed goods cause a lot of waste. Fresh produce, such as sausage, meat and cheese, can also be transported in fresh food cans that you bring with you.
- Use **shopping baskets, canvas and cotton bags instead of plastic bags**.
- The paper consumption can be reduced by **printing double-pages**. Buy recycled paper in addition, which mainly consists of old paper.



- In second-hand shops one can **buy and sell used clothes, furniture and flea market things**. Trading via the internet might be an option.
- **Go grocery shopping with a list** or work out a menu for the week. You will notice that you end up with fewer food leftovers. For what is left USB has summarized some great ideas in a recipe book for leftovers.
- Buy only as much as you can consume in time.
- **Refill packs save waste and money:** cleaning products and toiletries are often sold as refill packs, for example without a pump dispenser.
- **Repairing instead of discarding:** There are still workshops who carry out repair works. Furthermore, there is a growing number of repair cafés in many cities, also in Bochum. There one can repair one's broken appliance oneself under instruction.
- **Avoid multiple packaging.** Do not use unnecessary packages and so-called portioned packages.
- **Things that are needed rarely or for a certain period of time can be borrowed or rented.** Artisan's tools and construction machinery from the DIY market, cars (car sharing), books, CDs and recently also toys can be rented against a fee.



- **Take the opportunity to donate or give things away.**
Online gift and swap exchanges as well as classified ads in newspapers or on the Internet are practical. Local NGOs are grateful for donations in kind. However, you better inquire beforehand if anything is needed and what.
- The potable water in Germany is of a very good quality, and so one can do without bottled mineral water. Therefore: **tap water instead of bottled water.**
- Those who have a garden can **create a compost heap and produce humus soil with it.** A bio bin further offers the opportunity to **utilize** not only green waste, but also **organic waste from the kitchen like food leftovers and vegetable skins and peels.** In a biogas plant, these can be transformed into energy and fertilizer.
- **Use a lunchbox instead of plastic bags or aluminum foil.** At school, at the office or when travelling, lunchboxes are practical and environmentally friendly and can be used again and again after washing.
- Your private and business parties are more sustainable if **you refrain from using disposable tableware** and use china instead
- **Old mobile phones can be sold or given away.** At their recycling centers, USB provide bins just for mobile phones, which are passed on to recycling partners
- One can avoid the purchase of expensive **batteries** by using **rechargeable** ones.

Notice:

All citizens, associations or schools can register a city cleaning action at the USB to make their environment more livable. The collectors will be equipped with tongs, gloves and bags:
<https://www.usb-bochum.de/stadtputz/>



Our Contribution to Waste Avoidance

USB is an active partner in Bochum. We take part in city life in many areas. For example, with special projects like our bookcases, e.g. in Bochum-Ehrenfeld (Hans-Ehrenberg-Platz). Everybody can put his own well-preserved books into this case and can take other interesting books out – for free, of course.

Workshops and activities for all age groups

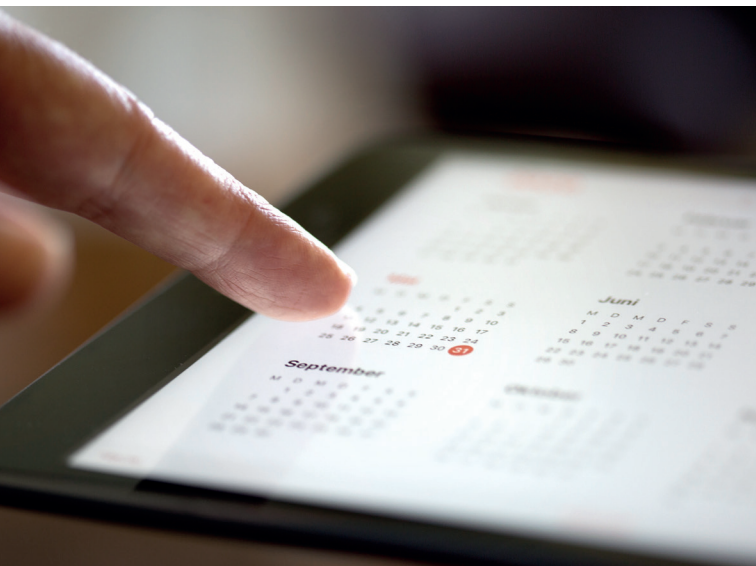
We also care a lot about education in disposing and avoiding waste for school children and youth. So, we regularly carry out workshops, which are often also suitable for adults.

- Handicraft with packaging material and electro scrap
- “Thread and back”, a workshop for children and adults, where the own old clothes are altered and prettied up.
- Thanks to the commitment of USB, Stadtwerke and Sparkasse Bochum, on their first school day, pupils of the 1st class at the enrollment ceremony are given lunchboxes and drinking bottles for a low-waste break.
- The USB is involved in many already existing environmental days, such as the Long Day of Urban Nature or the European Week of Waste Prevention, with activities in the field of waste prevention and sustainability. For example, upcycling and city cleaning activities or herbal excursions take place on these themed weeks or days.

Notice:

The USB offers workshops and activities in the area of waste prevention and environmental protection together with the consumer center:
www.usb-bochum.de/bildungsbereich

Appointments for the Havkenscheider Straße recycling center



When is an appointment necessary?

- Deliveries over 2 m³ in a van, sprinter or trailer are only possible at the Kornharpen central landfill. An appointment must be made for this. At all other recycling centers, deliveries can only be made by car. An appointment is not necessary here.
- For chargeable waste such as building rubble, construction waste and residual waste, the following applies: You only need an appointment for quantities over 200 kilograms. Lighter quantities are billed without an appointment at a flat rate according to a volume classification on site. It can be paid on site in cash or with EC card.



The QR code will take you directly to the website of the appointment service. Or also at [www.usb-bochum.de/appointments-recycling yard-zdk](http://www.usb-bochum.de/appointments-recycling-yard-zdk)

From which cities can waste be delivered?

- Only waste from Bochum will be accepted!
- Deliverers without a Bochum license plate must carry appropriate proof and present it without being asked, e.g. ID card, copy of the lease or purchase agreement.

Which wastes are subject to charges?

- The waste types of residual waste, construction waste, clay soil, mixed construction waste, insulating material, bituminous and tar paper and asbestos waste are subject to a charge.
- Commercial deliveries that arise in the course of commercial activity, such as wood, bulky waste, green waste and waste containing hazardous substances, are subject to a charge.

Payment can be made on site in cash or by EC card.

What documents/forms may be required?

- The completed form “Proof of waste from Bochum” must be brought to the delivery date. In particular, information on the origin of the waste, the type of waste, the quantity of waste and the transporter must be provided. The information must be signed by the waste producer for the waste origin and by the deliverer for the transport.
- This applies to all deliverers who make an appointment privately for wood, bulky waste or green waste, also for clearing out, etc.

For fees and charges of the chargeable waste types please call our service number.

Note:

The form “Proof of Waste from Bochum” is only required at an appointment for the waste types of bulky waste, wood or green waste.

Welcome to Our Recycling Centers!

You can drop off your waste in household quantities at the six recycling centers. Please refer to the table to find out what you can drop off where.

| | Blücherstraße 53 (Wattenscheid) | Am Sattelgut 132 (Linden) | Brandwacht 49 (Werne) | In der Provitze 20 (Mitte) | Schattbachstraße 80 (Laer) | Havkenscheider Straße** |
|--|---------------------------------|---------------------------|-----------------------|----------------------------|----------------------------|-------------------------|
| Used batteries | ■ | ■ | ■ | ■ | ■ | ■ |
| Car batteries | | | | | | ■ |
| Waste wood (untreated) | ■ | ■ | ■ | ■ | ■ | ■ |
| Wastepaper | ■ | ■ | ■ | ■ | ■ | ■ |
| Car tires (5 pc. Max.) also with rims | ■ | ■ | ■ | ■ | ■ | ■ |
| Old textiles | ■ | ■ | ■ | ■ | ■ | ■ |
| Mixed construction waste* 📞 | | | | | | ■ |
| Construction rubble* 📞 | | | | | | ■ |
| CDs and DVDs, corks | ■ | ■ | ■ | ■ | ■ | ■ |
| Electro-scrap: electric stoves, small household appliances, etc. | ■ | ■ | ■ | ■ | ■ | ■ |
| Glass (waste glass for glass container) | ■ | ■ | ■ | ■ | ■ | ■ |
| Green waste | ■ | ■ | ■ | ■ | ■ | ■ |
| Refrigerators | ■ | ■ | ■ | ■ | ■ | ■ |
| Fluorescent lamps | ■ | ■ | ■ | ■ | ■ | ■ |
| Metals | ■ | ■ | ■ | ■ | ■ | ■ |
| Problematic waste: varnish, paint etc. | ■ | ■ | | | | ■ |
| Residual waste* 📞 | | | | | | ■ |
| Bulky waste up to 2 m3 (without electronic components) | ■ | ■ | ■ | | | ■ |
| Furniture with electronic components | | | | | | ■ |
| Styrofoam from packaging | ■ | ■ | ■ | ■ | ■ | ■ |
| Light packaging with and without the Green Dot symbol/same materials | ■ | ■ | ■ | ■ | ■ | ■ |

*Waste subject to charges. Please enquire about prices by telephone. All information is subject to changes in legal regulations. Errors and omissions excepted.

**Information on how to make an appointment for the central waste dump can be found on page 28.

Problematic Waste

We accept small quantities of problematic waste here:

- Wertstoffhof Havkenscheider Straße
- Wattenscheid, Blücherstraße 53
- Bochum-Linden, Am Sattelgut 132

Opening hours of the recycling centers:

| | |
|-------------------------|-------------------------------|
| Monday to Friday | 7:30 a.m. to 8:00 p.m. |
| Saturday | 7:30 a.m. to 3:30 p.m. |

Problem wastes include:

- acids (battery acid)
- Energy-saving lamps
- fluorescent tubes
- lye
- pesticides
- Photographic chemicals
- spraying cans
- strong detergents (e.g., drain cleaner)
- Varnish, solvents
- Waste oil

You can also hand in this problematic waste (except for waste oil) at the Umweltbrummi [Environmental Lorry]. You will find the timetable of the Umweltbrummi at www.usb-bochum.de

Mineral fiber waste can be disposed of at the Havkenscheider Straße recycling center only in special mineral fiber bags at a charge up to a maximum quantity of 2 m².

At the Havkenscheider Straße recycling center (we also accept residual waste, rubble and mixed construction waste for a fee/payment

Here are some new HAZMAT symbols:



Our opening hours of the scale:

Monday-Friday 07:30 a.m. till 7:00 p.m.

Saturday 07:30 a.m. bis 2:00 p.m.

Weighing only possible at WSH Havkenscheider Straße!

Our Recycling Centers at one Glance



Frequently Asked Questions

Who is allowed to dispose at USB?

Our recycling centers are only available to the citizens of Bochum.

What is the emptying cycle of the different garbage bins?

Residual waste, bio and recyclables bins are emptied every fortnight. The paper garbage bins are emptied every four weeks.



● Recycling Centers

- Am Sattelgut 132
- Blücherstraße 53
- Brandwacht 49
- In der Provitz 20
- Schattbachstraße 80
- Havkenscheider Straße

● Green Waste Collecting Point

- Bergener Straße 59

What is the difference between full and partial service?

Full service means:

Each residual waste or organic waste container is collected from the stand by the USB and returned. Please see page 4 for more details.

Partial service means:

You place the container no later than 6.00 a.m. on the sidewalk of the street side of the property, or if that is not possible on the property at the property boundary for emptying. The full service, which is subject to a charge can be booked in writing upon request.

USB Bochum GmbH

Hanielstraße 1 // 44801 Bochum

Tel. 0234 3336-0 // Fax 0234 3336-109

